

El Sandalo

G.Zubillaga

♩ = 65

Soprano Solo

Se_ Co mo el san da lo que per fu ma el

Violin

Viola

Violoncello

7

Se_ Co mo el san da lo

11

que per fu ma el Ha_ cha_ que lo

15

hie e re que lo hie re

This system contains measures 15 through 18. The vocal line features a melodic phrase starting with a half note 'hie', followed by a quarter note 'e', a half note 're', and a quarter rest. This is followed by 'que lo hie re' with similar rhythmic values. The piano accompaniment consists of a steady eighth-note pattern in the right hand and rests in the left hand.

19

El san da lo Se Co mo el

This system contains measures 19 through 22. The vocal line begins with 'El san da lo' on a half note, followed by a quarter rest, and then 'Se Co mo el' on a half note. The piano accompaniment features a steady eighth-note pattern in the right hand and sustained notes in the left hand.

23

san da lo que per fu ma el

This system contains measures 23 through 26. The vocal line starts with 'san da lo' on a half note, followed by a quarter rest, and then 'que per fu ma el' on a half note. The piano accompaniment continues with a steady eighth-note pattern in the right hand and sustained notes in the left hand.

27

Ha_ cha_ que lo hie e_ re

This system contains measures 27 through 30. The vocal line features a melodic phrase with a slur over the first four notes and a fermata over the final note. The piano accompaniment consists of a steady eighth-note pattern in the right hand and sustained chords in the left hand.

31

que lo hie_ re_ El san

This system contains measures 31 through 33. The vocal line continues the melodic phrase with a slur and a fermata. The piano accompaniment maintains the eighth-note pattern in the right hand and sustained chords in the left hand.

34

da lo

This system contains measures 34 through 37. The vocal line has a simple melodic line with a fermata over the final note. The piano accompaniment continues with the eighth-note pattern in the right hand and sustained chords in the left hand.

El Sandalo

Soprano Solo

G.Zubillaga

$\text{♩} = 65$

Se_ Co mo el san da lo que per fu ma el

7

Se_ Co mo el san da lo que per fu ma el

13

Ha_ cha_ que lo hie e_ re que lo hie_ re_ El san

20

da lo Se_ Co mo el sanda lo que per fu ma el

27

Ha_ cha_ que lo hie e_ re

31

que lo hie_ re_ El san da lo

4

El Sandalo

Violin

G.Zubillaga

♩ = 65

6

10

14

18

22

26

30

33

4

El Sandalo

Viola

G.Zubillaga

♩ = 65

20



28

4



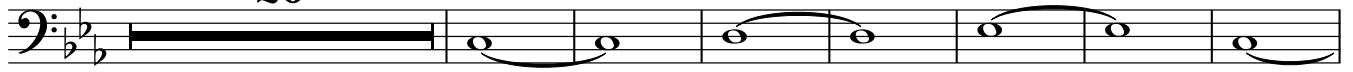
El Sandalo

Violoncello

G.Zubillaga

♩ = 65

20



28

4

